



HINTERLAND METALS INC.

The Ballarat property is located approximately 100km due south Dawson City, Yukon. The property consists of 94 claims (1955ha) obtained through an option agreement with local geologist/pro prospector Farrell Andersen. The project was acquired in response to Underworld Resources Inc.'s May 26, 2009 press release that announced a drill intersection of 3.4g/t over 104.0m on the Golden Saddle Zone located 15km north of the Ballarat property. The announcement touched off a classic staking rush that is still underway.

Hinterland was one of the first companies to secure a property in the White Gold area play. Unlike other companies however that have apparently acquired properties only to "tie-on" to the discovery, Hinterland optioned Ballarat based on solid technical results from previous work. Farrell Andersen has been active in the White River area as far back as 1980 when he was involved in placer mining. He first staked the 102 "NEAR" claims in 1990 that covered most of Underworld's present Black Fox property. In 1996 he re-staked the 12 "KIT" claims at the head of Ballarat Creek to cover a 1.2km southeast-trending soil geochemical anomaly outlined in 1991 that showed maximum individual values of 811ppb (0.8g/t) gold (Yukon Geology AFR 092982). Quartz-breccia boulders on the Kit claims were also reported to return values up to 32.0g/t (0.925opt) Au.

The Ballarat property covers the southeastern slopes of Thistle Mountain. Historical cumulative placer gold production from creeks draining Thistle Mountain including Ballarat, Thistle, Kirkman, Sparkling and Barker is reported to be 104,604 ounces in the period 1913 to 2006 (Compiled from Yukon Placer Mining Industry volumes published by Indian and Northern Affairs Canada). Other companies with claims on Thistle Mountain include Underworld, Kaminak, ATAC and Stina. The importance of Underworld's discovery cannot be overstated. The hole announced on May 26th is most significant gold intercept ever reported in the Dawson City area. The White Gold area lies within an underexplored part of the Tintina Gold Belt. This metallogical province has past production of 29.9 million ounces and 39.3 million ounces of resources for total gold resources of 69.2 million ounces. Notable gold deposits are Donlin Creek, Ft. Knox, Pogo and Brewery Creek.



Good infrastructure exists at Ballarat. There is an airstrip at the mouth of Ballarat Creek where commercial river barges operating on the Yukon River can easily deliver fuel, supplies and equipment. From there an 11km gravel road leads directly onto the property. There is also a 4x4 trail that leads up along the western edge of the property to the Thistle airstrip located 20km to the north. A placer miner's cabin provides ready housing to the exploration crew. Hinterland is aggressively exploring Ballarat with a detailed soil survey already

underway. The data from this survey will be used to plan drilling, expected to commence by September 2009. The estimated cost of the 2009 work is \$500,000 to \$700,000. Hinterland is seeking financing for this work.

Ballarat Gold Project

Highlights:

- White Gold area play, Yukon
- 811ppb in soils
- 1.2km soil anomaly
- Breccia boulders up to 0.93opt
- Good infrastructure
 - Airstrip
 - Road network
 - Heavy equipment onsite



HMI: TSX-V

SHARE CAPITAL

Shares Issued	51,285,401
Incentive Options	3,000,000
Warrants	6,340,000
Fully Diluted	60,625,401
Held by Management	13%
Market Capitalization	\$3.1 million
52-week Range	\$0.01 to \$0.15
150-day Avg. Volume	135,000

OFFICERS & DIRECTORS

Mark Fekete, P.Geo.	President & CEO
Ingrid Martin, CA	CFO
Greg Fekete, LLB	Secretary
Peter Thiersch, P.Geo.	Director
Vaughn MacLellan, LLM	Director
Fred Kiernicki	Director

FOR MORE INFORMATION CONTACT

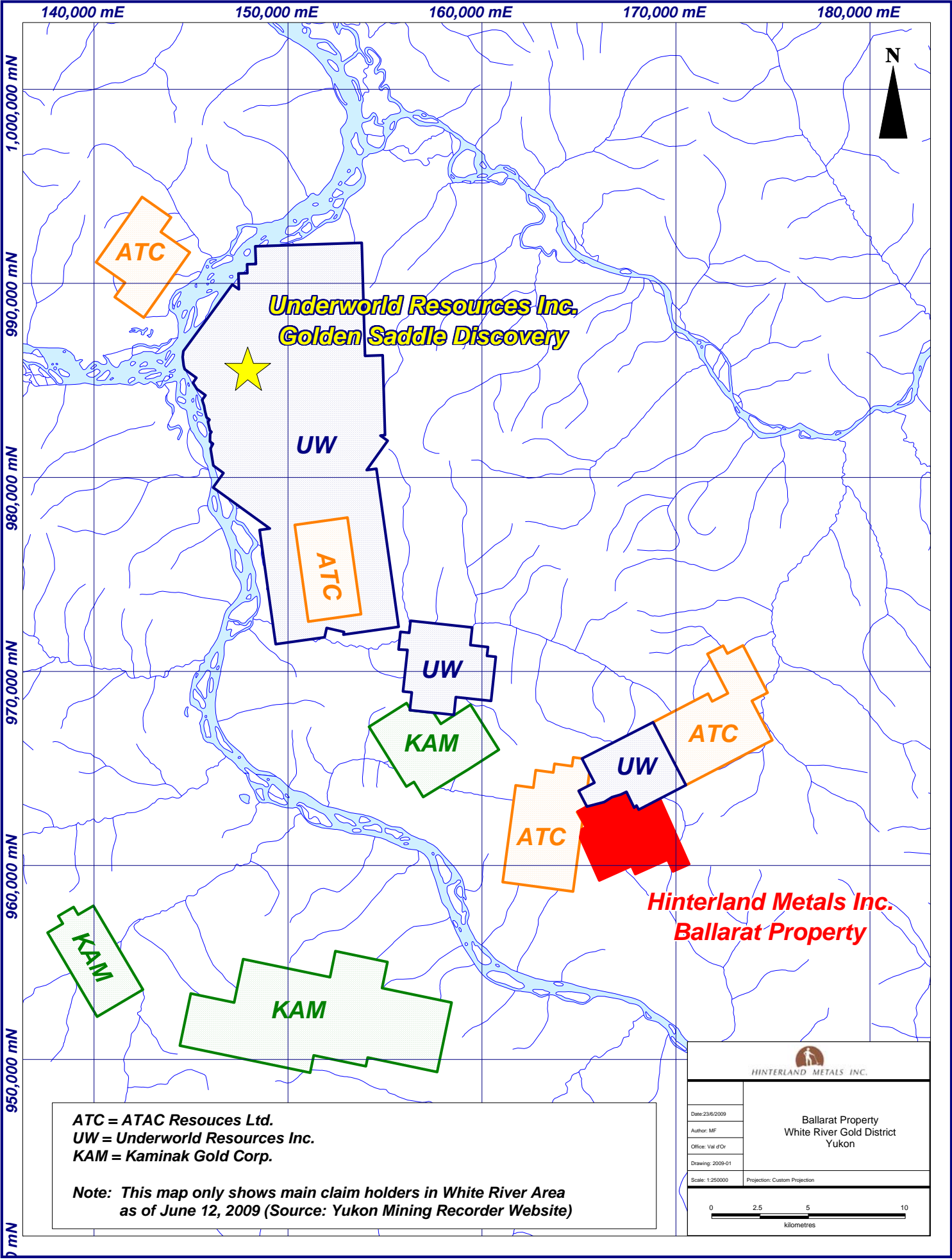
E-mail your questions to HMI@agoracom.com

Visit the Hinterland IR Hub at www.agoracom.com/IR/Hinterland



Mark Fekete, President & CEO
Toll Free 1-877-874-8182

www.hinterlandmetals.com



ATC

**Underworld Resources Inc.
Golden Saddle Discovery**



UW

ATC

UW

KAM

ATC

UW

ATC


**Hinterland Metals Inc.
Ballarat Property**

KAM

KAM

**ATC = ATAC Resouces Ltd.
UW = Underworld Resources Inc.
KAM = Kaminak Gold Corp.**

**Note: This map only shows main claim holders in White River Area
as of June 12, 2009 (Source: Yukon Mining Recorder Website)**

 HINTERLAND METALS INC.	
Date: 23/6/2009 Author: MF Office: Val d'Or Drawing: 2009-01 Scale: 1:250000 Projection: Custom Projection	Ballarat Property White River Gold District Yukon
